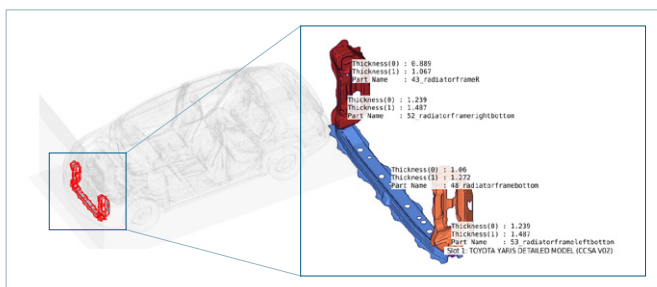


SimCompare – Towards automatic event detection for crash simulations

SimCompare is a tool for detecting events – in this context, deviations, such as anomalies or strange variations in deformations – arising in the results of similar simulation runs for crashworthiness analysis using finite element (FE) models. It provides a comparison of two FE simulation results based on multiple, arbitrary node/element data functions, e.g., displacements, plastic strains, or failed elements, over a range of time steps. The parts with the largest differences are automatically highlighted based on several comparison measures and an appropriate threshold.

User benefits

In computer-aided engineering (CAE), numerous design changes are applied within the overall design development process until the final model satisfies all design criteria. Each design change has to be analyzed and its influence on the simulation results must be compared and evaluated. SimCompare is a tool for easily analyzing the impact of design changes in terms of data functions.

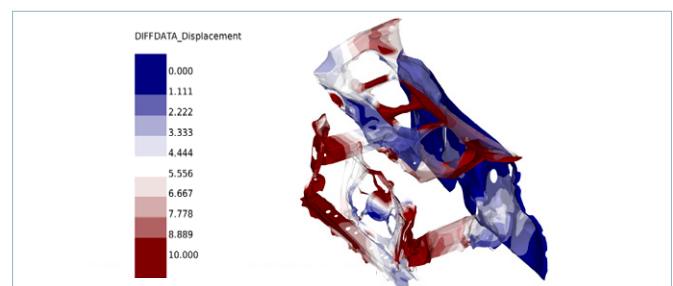


Exemplary design change: the thickness of the parts is increased by 20 % in the lower load path. Note that with the SCAI-Software ModelCompare, such design changes are detected and can be documented.

SimCompare automatically highlights the most relevant parts over time together with local hotspots with respect to design changes. Thus, users are provided with insight starting with only two simulations, without the burden of manually determining the differences or the necessity of setting up a simulation database. To document the influences of design changes, a report can be generated, which is automatically adjusted for each analysis setup.

Automatic event detection

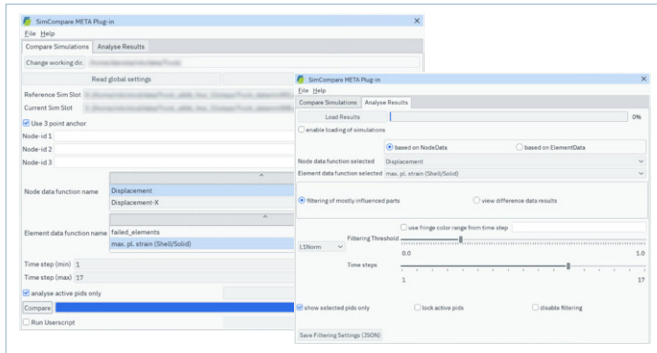
The SimCompare developers at Fraunhofer SCAI combine mathematics and machine learning to integrate existing application knowledge into data analysis methods. This enables us to provide SimCompare as an important step towards automatic event detection in an overall simulation data analysis workflow. Our tool allows users to systematically analyze a design tree and to detect deviations caused by design changes. SimCompare can be used together with the SCAI tool ModelCompare to identify design measures realized through model adaptation.



The lower load path part thickness has changed. We expect a switch in the load path energy absorption. SimCompare detects structural parts in the middle and upper load path responsible for load path energy absorption based on the largest deviations in total displacements between the two simulations at 30ms.

A seamless interface as a plug-in

SimCompare is available as a plug-in for GNS Animator and for BETA CAE Systems META*, as well as stand-alone batch tool. Results are visualized directly within the chosen post-processor. Thus, the CAE engineer needs no additional tools and can easily integrate the SimCompare analysis into a well-established analysis workflow.



SimCompare META plug-in

Comparison based on node and element data functions

Arbitrary node or element data functions available in the simulation models (e.g. signed plastic strains, displacements), as well as failed elements, can be selected for comparison via the plug-in GUI or by a settings file. Rigid body motion can be extracted for analyzing displacements by setting corresponding anchor points. Thereby, detailed insight into local influences on, e.g., deformations, plastic strains, and stresses can be evaluated with respect to a specific design change (measure).

Filtering of the most influenced parts

Differences are computed partwise for similarly discretized FE models. SimCompare uses specialized, well-established mapping techniques known from the SCAI tool ModelCompare. This enables comparisons of models with changed or combined parts. Filtering the most affected parts is supported interactively and automatically enabled to systematically detect influences of design changes. Moreover, the SimCompare GUI supports interactive browsing of the results over time. Thus, the software informs the user on what events occur locally (part ids and location) and when events occur (time range).

Several metrics for different purposes

Several comparison measures (metrics) are available to focus on global or local influences. On request, these can be extended to other engineering-based metrics, including expert knowledge.

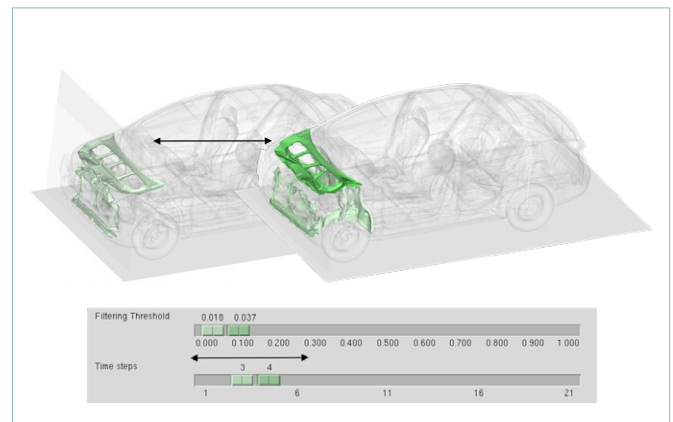
Visualization of local events

SimCompare visualizes deviations on both models, node- and elementwise in deformed state. Exceptionally, the visualization of differences in element failure is realized on the

non-deformed mesh, with failed elements visible. This feature simplifies the detection of local hotspots. The software shows the entire vehicle or the relevant parts to provide an overview of design change impacts.

Automatic report generation/storing of results

Automatic pdf report generation makes it easy to archive analysis results. Additionally, all differences are stored node-/elementwise for loading in the preprocessor tool. The comparison results are stored partwise in structured JSON files, supporting further post-processing. Therewith, the integration of results into a Simulation-Data-Management (SDM) tool of your choice is highly simplified.



Interactive filtering of the most influenced parts over time – left: threshold 0.018, timestep 3 (20ms), seven parts selected; right: threshold 0.037, timestep 4 (30ms), nine parts selected

All parts displayed in this information sheet are obtained from the open-source FE model of the Toyota Yaris.

* BETA CAE Systems is now part of Cadence

Contact

Fraunhofer Institute for
Algorithms and Scientific
Computing SCAI
Schloss Birlinghoven 1
53757 Sankt Augustin
Germany

Dr. Daniela Steffes-lai
Phone +49 2241 14-4053
daniela.steffes-lai@
scai.fraunhofer.de
[www.scai.fraunhofer.de/
en/ndv](http://www.scai.fraunhofer.de/en/ndv)

Distributed by

scapos AG
Schloss Birlinghoven 1
53757 Sankt Augustin
Germany

info@scapos.com
www.scapos.com

